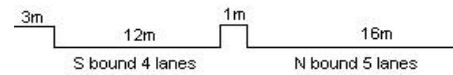


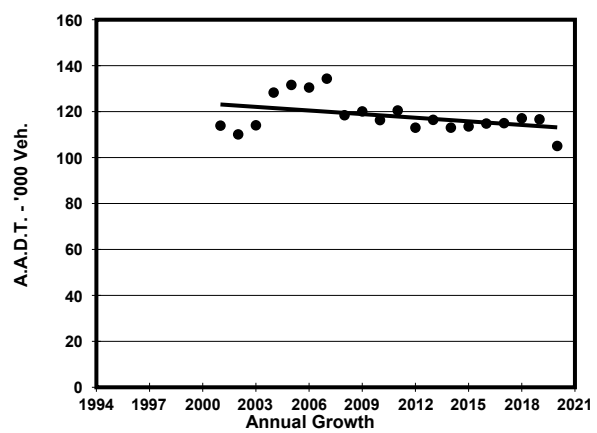
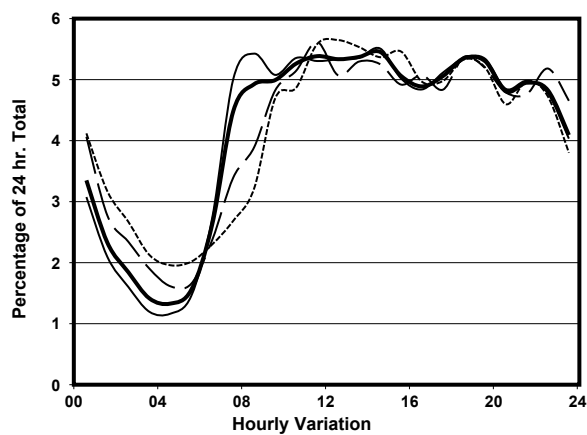
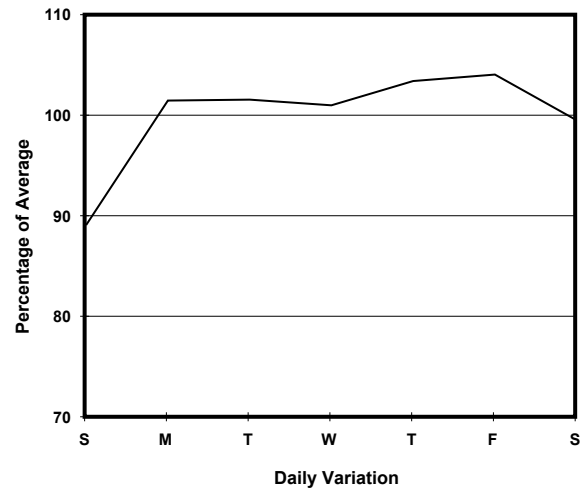
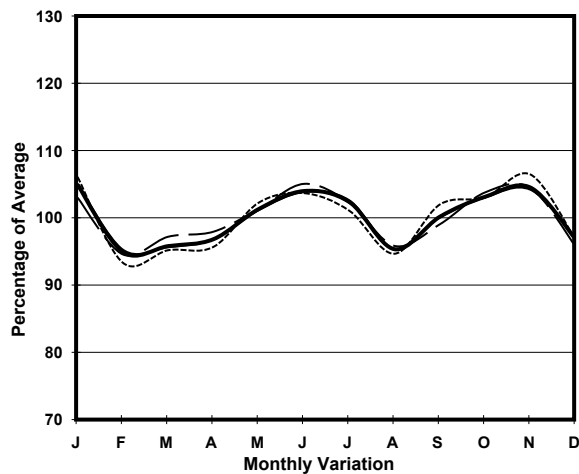
YEAR 2020

LINK CHATHAM RD N (from WUHU ST to HONG CHONG RD)

COVERAGE (B) STATION 4208
ROAD NETWORK MAJOR
ROAD TYPE PRIMARY DISTRIBUTOR



1. TRAFFIC FLOW VARIATION AND GROWTH



— All day — Mon.- Fri. Sat. - - - - Sun.

2. TRAFFIC CHARACTERISTICS (BY DIRECTION)

Parameter	All - Day	Mon. - Fri.	Sat.	Sun.
SOUTH BOUND				
A.A.D.T.	40990	41540	40820	40020
R 12 / 24 - %	57.3	58.1	52.8	57.8
R 16 / 24 - %	77.3	78.2	73.4	76.1
AM Peak Hour	0900-1000	0700-0800	0900-1000	0900-1000
One-way flow at AM peak hour	2210	2410	2280	2260
T - % (AM)	-	17.4	-	-
PM Peak Hour	1800-1900	1800-1900	1800-1900	1800-1900
One-way flow at PM peak hour	1740	1690	1770	2020
T - % (PM)	-	8	-	-
Prop.of commercial vehicles - 16 hr.	-	9.5	-	-
NORTH BOUND				
A.A.D.T.	64050	66480	64310	54220
R 12 / 24 - %	64.3	65.6	62.4	58.7
R 16 / 24 - %	84.1	85.4	82	79.1
AM Peak Hour	0800-0900	0800-0900	0900-1000	0900-1000
One-way flow at AM peak hour	3120	3610	2790	2170
T - % (AM)	-	13.1	-	-
PM Peak Hour	1800-1900	1800-1900	1600-1700	1600-1700
One-way flow at PM peak hour	3880	4090	3960	3080
T - % (PM)	-	11.9	-	-
Prop.of commercial vehicles - 16 hr.	-	11.9	-	-

3. OTHER INFORMATION AND COMMENT

4. Vehicle classification and occupancy - Monday to Friday

Time		Class of vehicle									
		Motor Cycle	Private Car	Taxi	Private LB	PLB	Goods veh.		Non Fr. Bus	Fr. Bus	
							Light	M & H		SD	DD
0700-0800	Pro	8.6	41.4	15.4	2.9	2.6	12.5	8.2	2.2	0.0	6.1
	Ocp	1.1	1.4	2.0	9.5	12.4	1.4	1.2	5.5	0.0	37.6
0800-0900	Pro	7.9	47.7	16.2	1.8	1.5	12.8	4.8	1.3	0.0	5.9
	Ocp	1.0	1.3	2.0	4.7	11.4	1.4	1.2	17.8	0.0	42.9
0900-1000	Pro	5.8	42.4	18.0	0.6	1.1	19.5	4.8	1.5	0.0	6.3
	Ocp	1.1	1.3	1.9	3.0	10.3	1.6	1.2	2.6	0.0	25.2
1000-1100	Pro	4.7	33.9	22.4	1.1	0.9	24.8	6.5	0.3	0.0	5.5
	Ocp	1.0	1.4	1.8	1.8	6.7	1.5	1.2	13.4	0.0	24.3
1100-1200	Pro	4.2	32.1	22.6	0.9	1.6	27.2	6.0	1.1	0.0	4.4
	Ocp	1.1	1.4	1.9	2.5	6.4	1.5	1.2	1.6	0.0	26.5
1200-1300	Pro	4.7	39.3	22.4	1.6	1.1	19.6	5.9	1.0	0.0	4.3
	Ocp	1.1	1.4	1.8	6.2	9.8	1.5	1.2	4.1	0.0	26.0
1300-1400	Pro	3.3	37.6	21.0	2.9	0.8	21.6	6.8	1.6	0.0	4.4
	Ocp	1.0	1.4	1.9	8.0	12.8	1.4	1.2	6.6	0.0	32.4
1400-1500 Peak hour	Pro	5.2	41.0	19.8	1.3	1.0	20.4	5.4	1.6	0.0	4.3
	Ocp	1.1	1.4	2.0	2.0	7.5	1.5	1.1	2.7	0.0	28.8
1500-1600	Pro	6.2	42.9	19.2	1.0	1.0	20.1	4.5	0.6	0.0	4.7
	Ocp	1.1	1.4	2.0	3.6	11.1	1.6	1.2	2.9	0.0	27.5
1600-1700	Pro	6.6	40.3	20.2	1.1	1.1	21.5	2.5	1.3	0.0	5.3
	Ocp	1.1	1.4	1.8	2.1	10.8	1.5	1.1	2.7	0.0	32.0
1700-1800	Pro	8.2	48.9	16.5	0.8	1.1	15.8	2.1	1.0	0.0	5.7
	Ocp	1.1	1.4	2.0	1.9	13.1	1.5	1.2	3.7	0.0	41.9
1800-1900	Pro	11.1	47.6	19.2	0.3	1.6	11.0	2.2	0.9	0.0	6.1
	Ocp	1.1	1.5	2.0	2.0	13.6	1.4	1.3	18.8	0.0	50.3
1900-2000	Pro	5.5	62.4	16.1	0.1	1.5	6.7	1.7	0.5	0.0	5.4
	Ocp	1.1	1.3	2.0	2.0	11.4	1.5	1.5	12.5	0.0	38.6
2000-2100	Pro	5.6	46.4	30.3	0.1	1.5	8.7	1.4	0.2	0.0	5.7
	Ocp	1.1	1.5	1.9	1.0	11.4	1.4	1.4	1.3	0.0	26.3
2100-2200	Pro	5.7	43.2	35.4	0.1	1.9	6.7	1.1	0.6	0.0	5.5
	Ocp	1.1	1.5	1.9	2.0	11.4	1.5	1.6	1.0	0.0	26.0
2200-2300	Pro	5.4	46.6	33.7	0.1	1.8	5.6	1.2	0.2	0.0	5.4
	Ocp	1.2	1.4	2.0	1.0	7.7	1.4	1.1	1.0	0.0	22.9
16 hours	Pro	6.1	43.4	21.5	1.0	1.4	16.1	4.1	1.0	0.0	5.3
	Ocp	1.1	1.4	1.9	5.1	10.6	1.5	1.2	6.2	0.0	32.3

Legend: Pro. Proportion of vehicles in % (Sum may not add up to 100% due to figure rounding)*

Ocp. Average occupancy of vehicles including both driver and passengers*

M&H Medium and Heavy

* All traffic data are collected from combined bounds